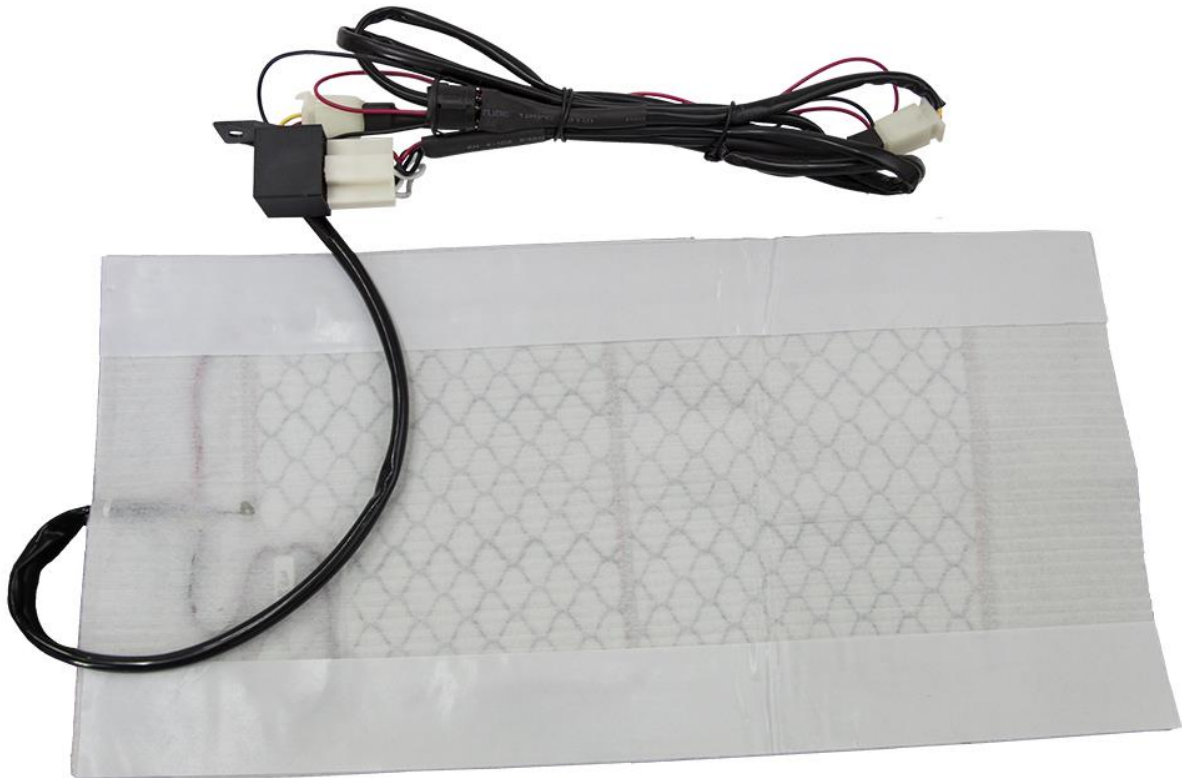




Seat Warmer Kit 800-01-033

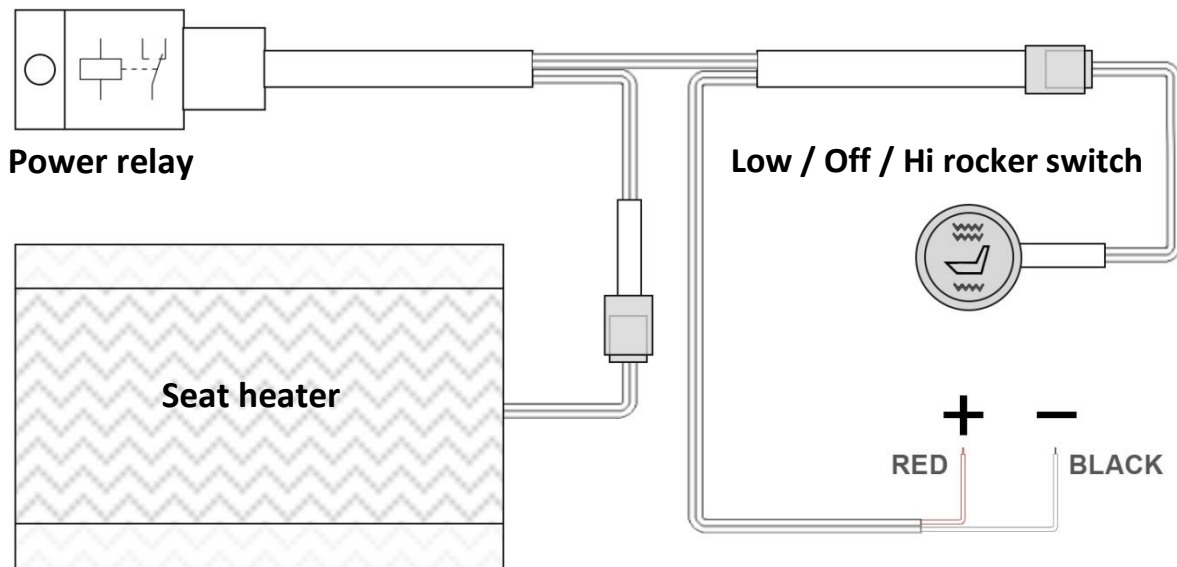


Thank you for purchasing SHARK Professional Accessories!

Congratulation on choosing this innovative seat heating. In order to enjoy our product as long as possible please read these instructions carefully and completely before starting the installation.

Warning:

This seat heater is designed for additional installation under the vinyl/leather seat cover. This seat heater will install into any vehicle with a 12V electrical system. Before installing this seat heater please read and follow all warnings and guidelines in these instructions. Seat heater must be installed and used in accordance with Installation instructions. For correct and safe function we recommend that the installation be carried out by a qualified professional workshop. Manufacturer and retailer are not responsible for any damages resulting from improper installation or usage, for operation or control of the product differently from these instructions. Improper installation, usage or modifications to the heater can increase the risk of damage to the product or vehicle. Prior to purchase or installation please check that your seat cover is suited for disassembly - this product is not designed for use with seats that have covers bonded to the foam. In case of doubt please contact your seat manufacturer directly. Check the functionality of the seat-heater and make sure that the cover of your seat is heat-resistant before starting the installation of this product.



INSTALLATION INSTRUCTIONS:

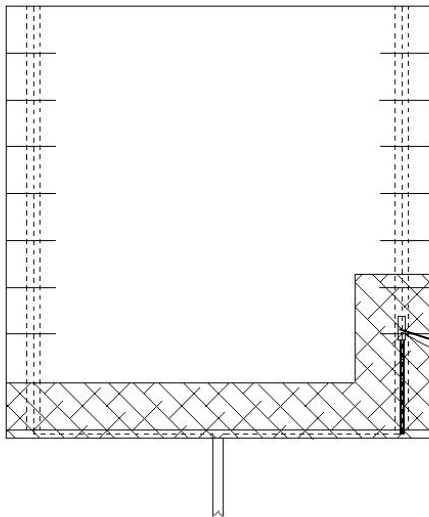
1. Remove the seat from the machine.
2. Remove the staples from the bottom of the seat, so the vinyl/leather can be rolled back.
3. Place the mat on the seat according to your desired sitting position. Route the seat heater cable to the bottom of the seat.
Note: Removing foam and drilling a hole through the bottom of the seat makes installation easier.
4. Remove the paper backing from the adhesive and lay the heater in position. Make sure to press down on the heater to insure a good adhesion between the seat and the seat heater.
Note: A thin layer of foam may be placed over the top of the heater to reduce the visibility of the heater through the seat cover.
5. The seat heater must lay flat on the seat; it cannot fold over any edges in the seat.
Note: If multiple seat heaters are used in one seat, they must NOT be allowed to overlap or touch.
6. Pull the seat cover back over the seat as tight as possible. Make sure the seat heater doesn't wrinkle and staple the seat cover back in place.

Installation and wiring of the rocker switch:

1. Drill a hole $\varnothing 20$ mm in a selected location where you want to have your switch.
2. Disconnect rocker switch connector from the wiring.
3. Run the rocker switch cable through the bored hole and re-connect wiring.
4. Fix the rocker switch in the hole drilled in Step 1.
5. Make sure that the fuse (included) is mounted to the positive (red) lead. For the power supply to be cut off automatically when the ignition is turned off, the positive (red) lead must be connected to "Accessory" connector, and NOT directly to the battery. Permanent power supply may damage seat heater, electric system and even cause fire. To prevent malfunction of the seat heater, please position the switch and fuse in a permanent waterproof area. In general, the wiring of our seat heater is waterproof. We do however recommend you to install them in such a way that they remain protected from water.

Kit contains:

Seat heater, Low / Off / Hi rocker switch, power relay, power cables with connectors, mounting hardware, installation instructions



Thermal Safety Cut-off Switch

Specifications:

Voltage:	12V
Power draw:	35W
Seat heater dimensions:	40 x 20 cm

Official Distributor:



Staropltzenecka 290, 326 00, Letkov
Czech Republic
Tel.: +420 378 21 21 21
info@aspgroup.cz
www.aspgroup.eu